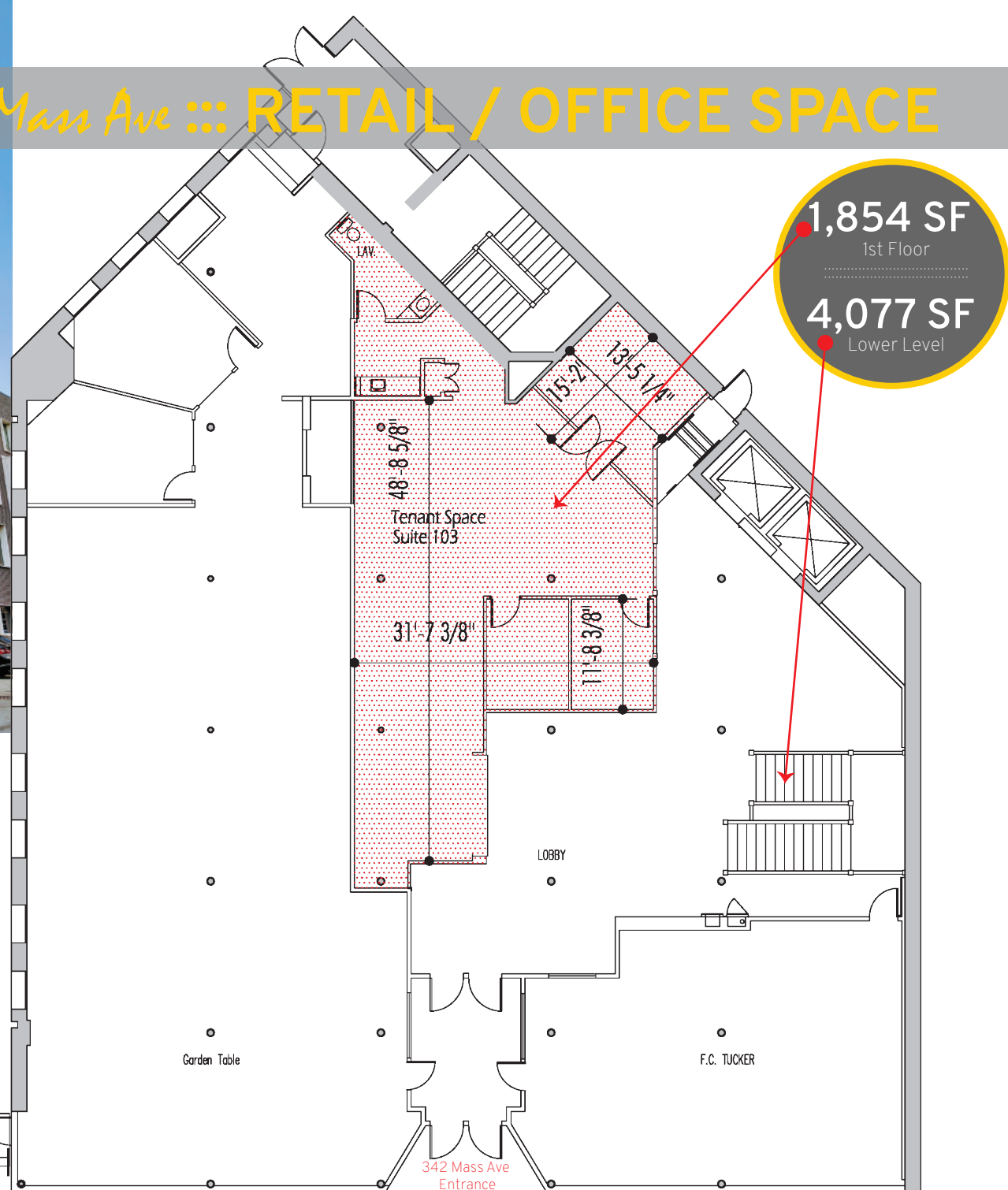


PRIME :: Mass Ave :: RETAIL / OFFICE SPACE



Highlights & Neighborhood

- >> Numerous gourmet amenities & dining nearby
- >> In the heart of Mass Ave Cultural District
- >> Abundant parking within minutes
- >> Easy interstate access to/from downtown
- >> Beautifully restored historic building
- >> Newly renovated lobby
- >> Digital security & after-hours entry system
- >> Access to Marietta Terrace next door

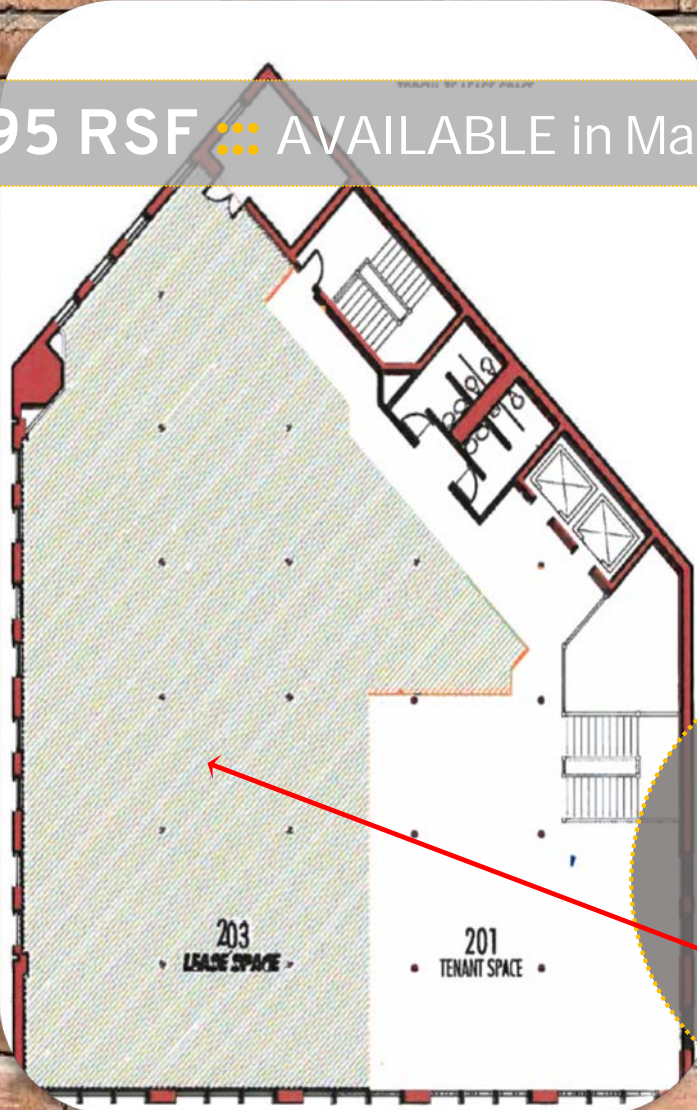


GERSHMAN PARTNERS

350 Massachusetts Avenue, Suite 400 | Indianapolis, Indiana 46204
(317) 599-4800 | www.gershmanpartners.com | © 2019

>>> Leasing Inquiries: Meghan DeMars Kiger
mkiger@gershmanpartners.com

5,795 RSF :: AVAILABLE in Mass Ave's Historic Marott Center



5,795
RSF
2nd Floor
Suite 203

Meet Your Neighbors:
F.C. Tucker, Garden Table, HomeAdvisor, Gershman Partners, Industrious, Hedge Row, Verizon Wireless, Furniture Solutions, Bakersfield, Louie's Wine Dive, MacNiven's, & so many more!

Located in the heart of bustling Mass Ave :: Private, Key-Pad Entry :: Spacious Private Lobby & Modern-Chic Kitchen :: Access to 2 Elevators, Main Staircase & Rooftop Terrace

